

# BlackSeed Collective

Bridging the gap between potential and opportunity — one community, one family, one seed at a time.

## COMMUNITY IMPACT OVERVIEW

### The Reality on the Ground



# 70%

Economically Disadvantaged  
of Alabama public school students

# 55%

Living in Poverty  
of students across the state

# 22%

Child Poverty Rate  
well above the national average

# 30%+

County-Level Poverty  
in the hardest-hit Alabama counties

### Why It Matters

## The Achievement Gap Is Not an Accident

Students in high-poverty districts score **0.84 standard deviations lower** than peers in low-poverty districts — driven by chronic underfunding and systemic neglect.

### 13% Less Funding

High-poverty districts receive 13% less per student than low-poverty counterparts

### 17.9% Federal Reliance

Many schools depend on federal funds for nearly 1 in 5 dollars of their budget

### Teacher Shortages

High-poverty schools face disproportionate staffing gaps and underqualified instructors

### Our Reach

## Rooted in Birmingham's Most Overlooked Neighborhoods

### West Birmingham

Midfield, Ensley, and Fairfield

### East Birmingham

Huffman, Tarrant, and Center Point

### Central Birmingham

High concentrations of underserved youth and families



### Four Pillars of Lasting Change



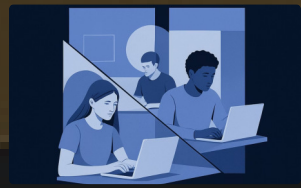
#### Youth Development & Mentorship

Building confidence, character, and leadership from the ground up



#### Cultural & Community Experiences

Centering identity and belonging as essential ingredients for growth



#### Workforce & Entrepreneurship

Exposing youth to real career pathways and business ownership early



#### Strategic Partnerships

Collaborating with schools, orgs, and funders to multiply our reach

### How We Show Up

#### Investing

Directing real resources — time, funding, and expertise — into communities that have been chronically underfunded

#### Partnering

Showing up as a collaborator alongside families, educators, and local leaders — not above them

#### Building

Creating programs, pipelines, and pathways designed for **long-term, measurable impact**

### Join Us

## Let's Get Involved.

The seeds of change are already planted. **Your partnership is what helps them grow.**



#### Fund a Program

Direct dollars to youth development, mentorship, and workforce initiatives



#### Volunteer Your Skills

Bring your expertise into classrooms, workshops, and community events



#### Build a Partnership

Align your organization's mission with communities that need you most